



A Royal Meeting

Port Surveyors, Harbor Pilots Assist in Queen Mary 2 Arrival

It was a welcome fit for a Queen. More than 6,000 spectators, 800 sailboats and yachts, a dozen media helicopters and three blimps gathered under clear blue skies to watch the Queen Mary 2 greet her predecessor and namesake, the Queen Mary, in Long Beach Harbor on February 23.

Their challenge was to bring the Queen Mary 2 as close as possible to the Queen Mary – ever mindful that a single misstep could cause the world’s biggest and most expensive ocean liner to run aground.

The historic meeting was a spectacular sight. And it would not have been possible without the behind-the-scenes preparations made by Port of Long Beach surveyors, who mapped out the harbor floor using detailed Global Positioning Satellite (GPS) measurements, and the expertise of Jacobsen Pilot Service, which helped guide the massive Queen Mary 2 into the relatively shallow waters of the harbor.

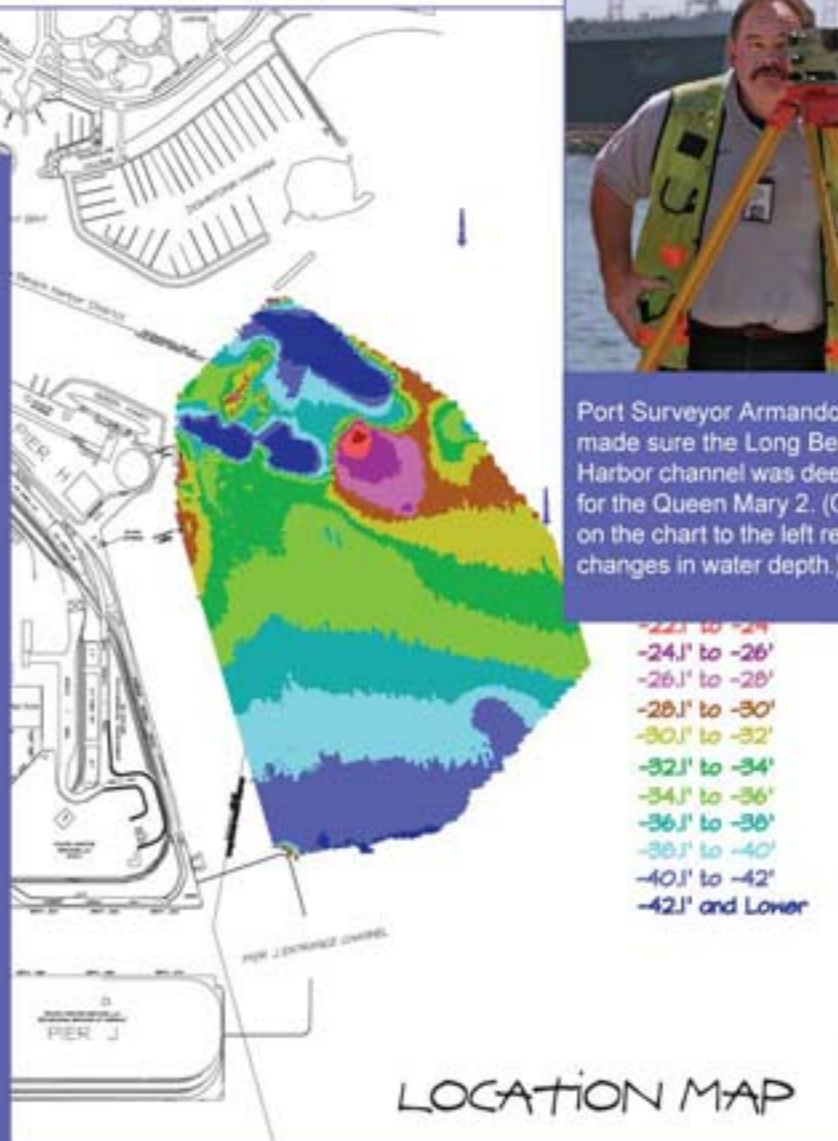
Ultimately, the work of the surveyors and pilots brought the Queen Mary 2 to within a-quarter mile of the Queen Mary, for a first-ever meeting that drew worldwide attention.

And just how accurate were the Port’s surveyors? At her closest, the massive Queen Mary 2 rested just three feet above the harbor floor.

Port TV “Pulse of the Port”

See more of the Queen Mary 2’s historic arrival on the latest episode of the “Pulse of the Port,” airing on Long Beach Television 8, Charter Communications.

The program includes a profile of Port surveyor Amando Boyd, who helped prepare the maps for the QM2’s voyage into Long Beach Harbor. The program airs at 7:30 p.m. each Monday and Saturday, and 7 p.m. Friday on Channel 8, the Long Beach government access channel. The program is also available for viewing on other cable stations, and at the Port’s web site, www.polb.com



Port Surveyor Armando Boyd made sure the Long Beach Harbor channel was deep enough for the Queen Mary 2. (Colors on the chart to the left represent changes in water depth.)

Escorted by a flotilla of boats, the Queen Mary 2 sails into Long Beach Harbor for its historic meeting with the original Queen Mary.