

Ninth Street Rail Crossing in West Long Beach Closes March 9



The Ninth Street at-grade railroad crossing in West Long Beach is closing as of March 9, 2019.

Both directions of the crossing near Pico Avenue will be closed permanently.

The roadway will not reopen, except for oversized trucks with special permits.

(Go to www.polb.com/oversize for more information.)

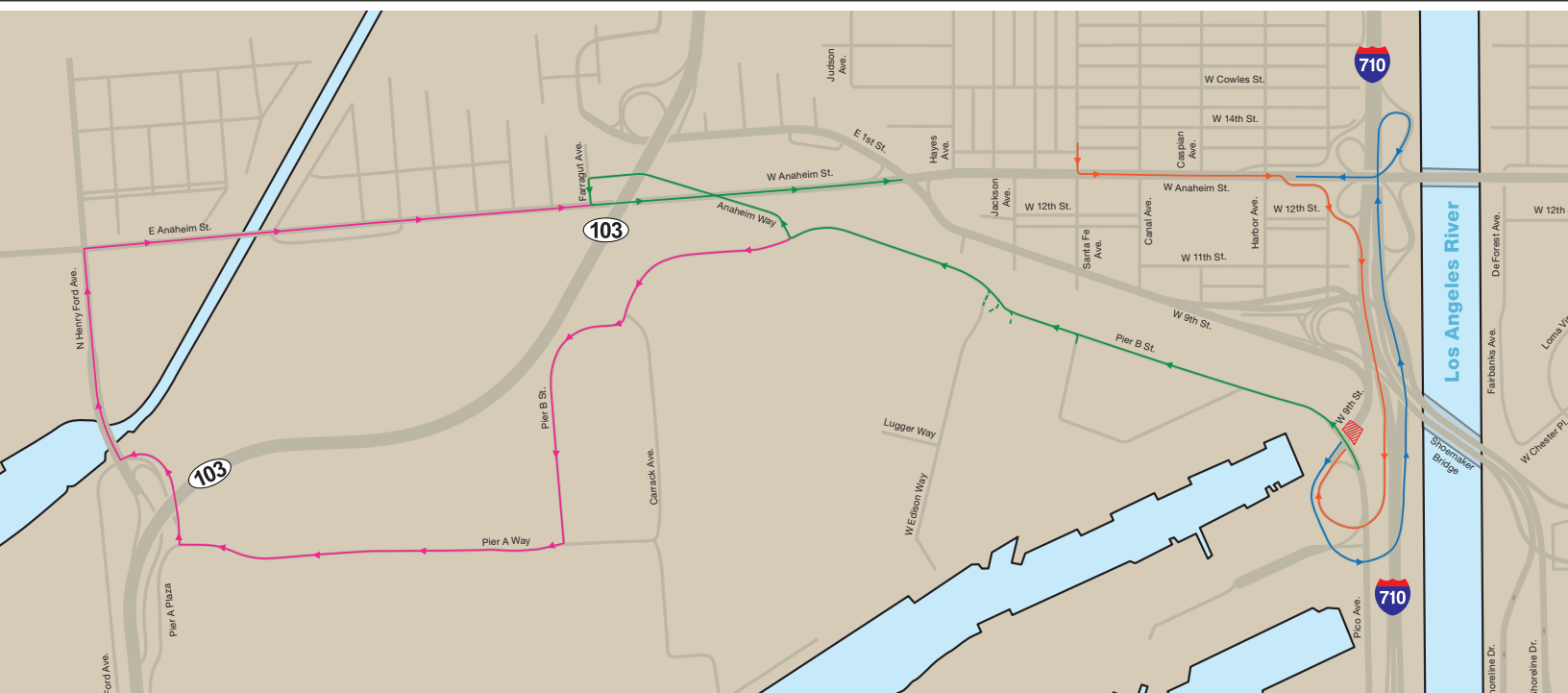
Alternate routes are available for cars and trucks.

For more information on the closure, please contact:

Lee Peterson, Port Media Relations Manager Lee.Peterson@polb.com or (562) 283-7715

Mark Erickson, Senior Program Manager mark.erickson@polb.com or (562) 283-7367

Closure of Ninth Street At-Grade Crossing Alternate Routes



- | |
|---|
| <p>Legend</p> <ul style="list-style-type: none"> Pier B Street via Pier A Way to Henry Ford Ave to Anaheim Street (both directions). Pico Avenue to Pier B Street to Anaheim Way to Farragut Avenue to Anaheim Street (both directions). West Anaheim Street to southbound I-710, exit to Pico Avenue. Pico Avenue to Northbound I-710, exit to West Anaheim Street, eastbound or westbound. |
|---|

El Cruce de Ferrocarril de la Calle Ninth Street en Long Beach Oeste, Cierra el 9 de Marzo



El cruce de ferrocarril a nivel, de la calle Ninth Street, en Long Beach oeste, se cerrará a partir del 9 de marzo del 2019.

Las dos direcciones de circulación, cerca de la avenida Pico, se cerrarán permanentemente.

La vía no se volverá a abrir, excepto para camiones sobredimensionados con permiso especial.

(Visite www.polb.com/oversize para mayores informes.)

Hay rutas alternativas disponibles para autos y camionetas.

Para más información sobre el cierre, favor de comunicarse con:





Lee Peterson, Gerente de Relaciones con los Medios para El Puerto Lee. Peterson@polb.com ó (562) 283-7715

Mark Erickson, Gerente Principal de Programas mark.erickson@polb.com ó (562) 283-7367

Rutas Alternativas para el Cierre del Cruce a Nivel de la Calle Ninth Street



Leyenda

-  Calle Pier B por Pier A a la avenida Henry Ford a la calle Anaheim Street (en las dos direcciones).
-  Avenida Pico Avenue a la Calle Pier B Street a Anaheim Way a la Avenida Farragut a la Calle Anaheim (en las dos direcciones).
-  Calle West Anaheim Street a la I-710 Sur, con bajada en la Avenida Pico.
-  Avenida Pico Avenue a la I-710 Norte, con bajada en la calle West Anaheim, al oriente o poniente.