



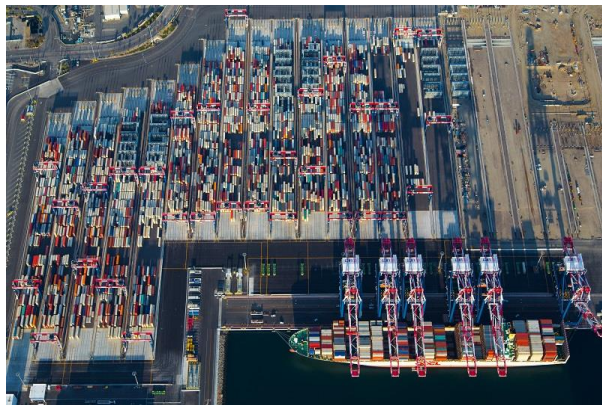
News Release

Port Sets Record for October Cargo **Long Beach on pace for highest-ever volumes in 2017**

Nov. 9, 2017

A year of records continues at the Port of Long Beach, where this October was the busiest in history, as container volumes surged 15 percent compared to the same month a year ago.

Trade has been growing so rapidly in 2017 that the record-setting October — at 669,218 twenty-foot-equivalent units (TEUs), one of the Port's strongest all-time results — was only the fourth-busiest month of the year behind July, September and August.



"October used to be the industry's busiest month of the year, with retailers preparing for Christmas," said Port of Long Beach Executive Director Mario Cordero. "Now, with other popular shopping seasons like back-to-school, Halloween and Black Friday, ocean carriers are spreading shipments across more months to maximize the services we have developed to serve them."

Inbound containers destined for retailers jumped 14.3 percent to 339,013 TEUs. Export boxes decreased slightly, 0.5 percent, to 126,150 containers. Empty containers sent overseas to be refilled with goods increased 28.9 percent, to 204,055 TEUs.

"By taking a long view of our finances and embarking on a \$4 billion modernization — the largest of any U.S. seaport — we've positioned the Port of Long Beach to be one of today's most attractive, dependable gateways," said Harbor Commission President Lou Anne Bynum.

“With two months left in 2017, we’re on track to have our best year ever.”

Through the first 10 months of the year, 6,234,930 TEUs have been moved through the Port, a 9.5 percent increase over the same period in 2016.

The Port of Long Beach is one of the world’s premier seaports, a gateway for trans-Pacific trade and a trailblazer in goods movement and environmental stewardship. With 175 shipping lines connecting Long Beach to 217 seaports, the Port handles \$180 billion in trade annually, supporting hundreds of thousands of Southern California jobs.

For the latest monthly cargo numbers, [click here](#).

More detailed cargo numbers are at www.polb.com/stats.

Media Contact: Lee Peterson, Port of Long Beach Media Relations Manager, (562) 283-7715 (office), (562) 519-2177 (cell), lee.peterson@polb.com.

Share this Story:



Follow the Port of Long Beach:



[Facebook](#)



[Twitter](#)



[Instagram](#)



[YouTube](#)



polb.com
