



## Internship Positions Available



Do you want to learn more about the maritime and logistics industry through the unique perspective of an internship with the Port's Communications team? There are paid positions available in Graphics and Community Relations for college students and recent graduates interested in these fields, but don't delay in applying!

The deadline to submit an application is Wednesday, May 11. To learn more about the positions and to apply, visit our [Port Academy webpage](#).

## Grand Prix Photos

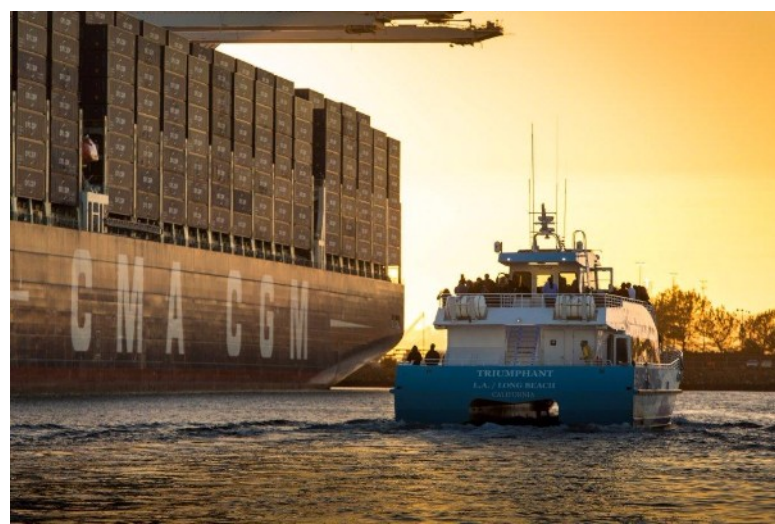


Did you spot the Port of Long Beach-branded bridge stretching across Shoreline Drive for the Toyota Grand Prix last month? More than 200,000 people came to the popular three-day event, the city's biggest of the year. The Port is proud to sponsor the race every year and host a community booth with fun giveaways and a photobooth. Not only that, for the first time the Port had a contest on Instagram for a pace car ride before a race and Instagram user @calijulzsays was the lucky winner!

Didn't make it to the races? Check out exclusive, behind-the-scenes photos from the race on our [Facebook](#) page.

If you happened to stop by our photobooth, check out the pictures in [photo gallery one](#) and [photo gallery two](#).

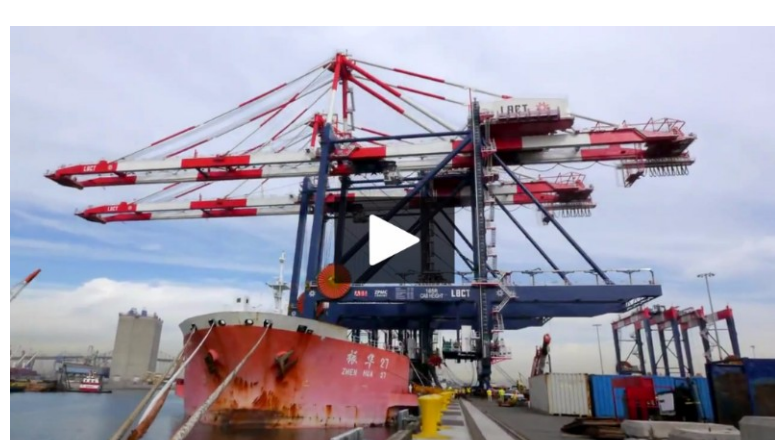
## POLB Hosts Second POP-UP Tour with Aquarium of the Pacific



If you follow the Port of Long Beach on social media, then you may have noticed that we hosted our second POP-UP tour in partnership with the Aquarium of the Pacific's popular Urban Ocean Festival. Guests learned all about how the nation's second-busiest port operates in a sustainable way and how marine wildlife coexists with human activities from Port and Aquarium of the Pacific representatives.

Didn't make it on this tour? Enter into the lottery for the Port's regularly scheduled Harbor Tours. Signups for July tours will be available from 8 a.m. to 8 p.m. on Monday, June 6 at [polb.com/porttours](#). You can also keep an eye on our [Instagram](#), [Facebook](#) and [Twitter](#) pages for the next specialized POP-UP tour!

## Bigger Ships Mean Bigger Cranes



To grab cargo containers from today's much taller megaships, which can carry as many as 18,000 containers, cranes must rise to 150 feet or higher — the equivalent of reaching over a 14-story building! That is why new and bigger cranes are being brought into the Port of Long Beach and current ones are being raised, boosting both productivity and safety.

It's no simple task to raise cranes that can weigh more than 145,000 pounds.

The endeavor requires a jacking frame, which is assembled around an existing crane to be held in place as it is raised. The crane is then cut in half before being lifted. A steel insert is welded onto the legs, adding the necessary height. Altogether, the process takes between 50 and 70 days.

Delivering new cranes is no easy feat either. Cranes arrive from Asia fully constructed aboard a specialized ship, following a two-week voyage across the open ocean.

[Watch this quick video](#) to get a glimpse at what it takes to install a newly delivered crane at the Port of Long Beach.

## Upcoming Events

The Port of Long Beach is proud to sponsor these community events! Click on the event for more information.

### [Port to Learning Gallery Artful Healing](#)

**Open April 10 - May 29**  
Museum of Latin American Art  
628 Alamitos Ave.  
Long Beach, CA 90802  
Free admission on Sundays

### [\\*Community Tree Planting](#)

**Saturday, May 7**  
8:30 a.m. - 4 p.m.  
Washington Middle School  
1450 Cedar Ave  
Long Beach, CA 90813

### [AOC7 Literacy Fair](#)

**Saturday, May 21**  
10a.m. - 1 p.m.  
Mac Arthur Park  
1321 E Anaheim St.  
Long Beach, CA 90813

### [Long Beach Pride Parade](#)

**Sunday, May 22**  
10:30 a.m. - 12:30 p.m.  
Step-off is at 10:30 a.m.  
Ocean Blvd. between Lindero Ave. & Alamitos Ave.  
Long Beach, CA 90803

### [Harbor Tour Lottery Registration](#)

**Monday, June 6**  
8 a.m. - 8 p.m.  
Enter the lottery for a tour in June

*\*For more information about the tree plantings, please contact the Neighborhood Services Bureau at (562) 570-6866*

## Get Social With Us

- Facebook
- Twitter
- Instagram
- YouTube
- polb.com

## Share With Your Friends

- Share
- Tweet
- Forward

## What are you interested in knowing?

We want to know what you, the community, are interested in knowing! Please e-mail suggestions and questions for this newsletter to [communityrelations@polb.com](mailto:communityrelations@polb.com).